



Trillian Trust
**Māori Sports
Awards**

Pūrongo ā-tau
**annual
report**
2009

Te Tohu Taakaro o Aotearoa Charitable Trust



The logo features the text 'TRILLIAN Trust Inc.' in a bold, dark blue font. 'TRILLIAN' is in all caps, while 'Trust Inc.' is in title case. The text is enclosed within a thick, yellow, hand-drawn style oval. A thin yellow swoosh underline is positioned between the two lines of text.

TRILLIAN
Trust Inc.

SERIOUS ABOUT YOUR COMMUNITY

The background of the lower half of the page is a light grey, stylized Māori decorative pattern. It features intricate, swirling motifs characteristic of traditional Māori art, such as the 'haka' or 'whakairo' designs, rendered in a soft, shaded style.

Trillian Trust
Māori Sports Awards



Trillian Trust
Māori Sports
Awards

Contents

Rārangi take

- 3 Patron & Taumata
- 4 Board of Trustees
- 5 CEO & Operations
- 8 Māori Sports Hall of Fame
- 10 Sportsperson of the Year
- 12 World Champions
- 15 Award Winners
- 27 Gallery
- 30 Scholarships
- 33 Tamariki Day
- 37 Financial Report

Trillian Trust
Māori Sports Awards



Our tohu focuses on the three main characteristics, these being directed at Sport, Culture and Education. When visually looking at the tohu it shows a hand grasping and reaching for something; as we all do in this day and age. To strive and to succeed in what we have set out to accomplish within Sport, Culture and Education.

- ▶ **National Māori Sports Awards**
- ▶ **Tamariki Sport & Cultural Day**
- ▶ **Māori Sports Awards Scholarships**
- ▶ **Māori Sports Hall of Fame**
- ▶ **Māori Sports Research & Data Base**



Taumata

Te Taumata mo Te Tohu Taakaro o Aotearoa



Patron

Kiingi Tuheitia



Kaumatumā

Margaret Hiha

Ngati Rangitihi



Henare Kininmont Pryor

Ngata Awa, Ngati Rangatihi, Ngai Tuhoe

Trillian Trust
Māori Sports Awards



Board of Trustees

Chairman - Pine Harrison BA



E nga iwi, e nga reo, e nga karangarangatanga maha o nga hau e wha, nga mihi tino nui ki a koutou katoa.

I am pleased to report that the two important events conducted by the Trust – National Maori Sports Awards and the Tamariki Sports and Cultural Day were enjoyed by all participants and that all of our stakeholders needs and requirements were effectively dealt with.

Heartfelt thanks must go to Dick and Desrae for enabling us to continue to maintain and develop the vision of our founder. Neither should we overlook the major backup that Dick receives from Alan Chester, our Financial Controller.

The awards function would have to be one of the best and most enjoyable we have experienced in our nineteen year history. This has resulted from a combination of the high quality of entertainers, including Australian Idol winner, Stan Walker, the exceptional range of sporting talents on display, the excellent catering arrangements and menu, and a programme professionally pulled together by MC Stacey Morrison.

Our Tamariki ora, hosted at Te Kura Kaupapa Maori a rohe o Mangere on Friday 20th November was an undoubted success. Our Trustees wish to convey to all of the organizers involved a debt of gratitude. Many thanks also to our sponsors. It is my pleasure and privilege as Chairman of Te Tohu Taakaro o Aotearoa Trust to express our Board's heartfelt thanks and gratitude to the many sponsors, sub contractors, entertainers, volunteers, community and sports people who ensured that the two major events of the Trust for 2009 were successful and achieved the vision and objectives of the Trust.

I wish to also thank all of my fellow Board members for the time and effort you have put into the governance of the Trust's activities and to the CEO and his team for your commitment and dedication to the kaupapa of the Trust.

Nga mihi tino nui ki a koutou katoa.

Pine Harrison
Chairman



Kevin Pryor



John Paki



Ron Karaitiana



Dr Tamati Reedy



Waka Nathan



CEO & Operations

Kaiwhakahāere Matua



*E ngā mata-ā-waka o te motu,
Tēnā koutou katoa*

The greatest success of this Trust's annual outcome is the acknowledging of our Māori athletes who perform outstandingly on the regional, national and international arena. This is further enhanced by the awarding of many Māori Sports Awards Scholarships.

It is with amazement that the unearthing of Māori athletes of the past through our research and database unit, whose performances in those times were outstanding and sadly have barely been recorded. Many of these athletes have been inducted to our Māori sports hall of fame.

Sincere congratulations must go to all receiptants of awards and scholarships and top of that list is the Albie Pryor Māori Sports person of the Year – 'Benji Marshall'

I must acknowledge all stakeholders who I work with, and who support our kaupapa, including my part time team of Michelle McGrath and Desrae Garratt, our financial controller Alan Chester, and the wisdom and ease of support from our Board of Trustees.

*Me te mihi nui mō ā koutou manaakitanga
Nāku noa, nā,*

Richard (Dick) Garratt
CEO / Kaiwhakahaere matua



Desrae Garratt
Administration



Michelle McGrath
Special Projects

Trillian Trust
Māori Sports Awards



Events Centre



Trillian Trust
Māori Sports Awards

Entertainment

Stan Walker



Maisey Rika



Jo Hopkins



Roland Williams



ReQuest



Trillian Trust Maori Sports Awards



Māori Sports Hall of Fame

Te Rongo-tu-taua a Maui



Trillian Trust
Māori Sports Awards



Margaret Te Kahurangi (Meg) Matangi MBE

Margaret (Meg) Matangi MBE

9 July 1911 – 2 August 1990

Te Atiawa, Taranaki, Ngāti Mutunga

Margaret Te Kahurangi Matangi was born in New Plymouth the second of 12 siblings to Tioro Matangi and Hinehau (nee Karena). Margaret was educated firstly at Bell Block and Fitzroy schools before enrolling at New Plymouth Girl's High School.

Margaret was quoted "we were from a farming family, but I was schooled in town, because my parents wanted us to have every opportunity".

Her expertise as an athlete showed up early, as a third former, Margaret entered the senior athletics championships at the New Plymouth Girl's High School and won it, continuing that accomplishment for the next three years.

On leaving school Margaret wanted to engage in a career in teaching, and enrolled at Auckland Teachers Training College.

Meg (as she was now known) represented and captained Taranaki, Wellington, Auckland, Auckland University and NZ University, but it was in July 1938 her training was interrupted when she was selected to play for the first ever New Zealand basketball team (now known as netball) to compete in Australia, a further honour for Margaret was being named as captain of that inaugural NZ team.

Meg's work for the Intellectually handicapped was recognized, when she was awarded the first 'Rotary Club of Auckland Vocational Award'

In 1976 Margaret was awarded an MBE, personally presented with her decoration by Queen Elizabeth in February 1977.

ACHIEVEMENTS

Taranaki
Wellington
Auckland 1934,35,36
Auckland University
NZ University
New Zealand 1938

HONOURS

Rotary Club of Auckland
Vocational Award
Awarded an MBE in 1976

Trillian Trust
Māori Sports Awards



the Albie Pryor memorial

Māori Sports Person of the year

Rongomaraeroa



Benji Marshall
Ngāi Tuhoe

It is a tribute to this outstanding young sportsman, who showed immense courage in fronting up to the awards evening, on his journey back to Whakatane from Australia to farewell his father who had passed away the day before.

This courage was rewarded with the Senior Māori sportsman of the year award and then the ultimate award 'The Albie Pryor Māori sportsperson of the year'.

Benji is the current captain of the West Tigers in the NRL competition and the captain of the New Zealand National rugby league team – 'The Kiwis'.

Benji attributes his success on and off the field to his mother Lydia, his whangai matua Mick and Annalie Doherty and the Marshall whanau headed by Toby and Phil.



Trillian Trust
Māori Sports Awards



Te Puni Kōkiri

REALISING MĀORI POTENTIAL

Māori World Champions

Jason **WYNYARD**
Ngapuhi, Ngati Maniapoto

WOOD
CHOPPING

Karmyn **WYNYARD**
Tainui

SINGLE
SAW

Storm **URU**
Ngāi Tahu

ROWING

Jade **URU**
Ngāi Tahu

ROWING

Trillian Trust
Māori Sports Awards



Te Kaunihera o
MANUKAU
City Council

Māori World Champions

Shayne **TAUPO**
*Tainui, Ngapuhi, Ngati Whatua,
Ngati Ruanui*

KARATE

James **TE HUNA**
Ngāti Tuwharetoa

CAGE
FIGHTING

Tohora **HARAWIRA**
Ngapuhi

POWER
LIFTING

Tiffany **PIPER**
*Ngāti Kahungunu,
Ngāti Tuwharetoa*

PISTOL
SHOOTING

Trillian Trust
Māori Sports Awards



Trillian Trust Senior Māori Sportsman
Te Tama-ā-Tānenuiārangi



2009 Benji Marshall



2008 Ruben Wiki



2006 & 2007 Storm Uru



2005 Michael Campbell



2004 Jarrad Martin



Dean Agnew CEO Trillian

Trillian Trust
Māori Sports Awards



Philip Parker
Māori Sports Administrator



Sheldon Eden-Whaitiri
Māori Umpire/Referee



Benji Marshall
Albie Pryor Memorial Sports Person and
Senior Māori Sportsman



Zac Guildford (Whetu Tipiwai Accepting)
Junior Māori Sportsman



Tiffany Piper
Junior Māori Sportswoman



Sharon Hawke
Māori Sports Media Award



Matthew Lack
Disabled Māori Sports Person



Huakina Trust
Best Community Initiative Award



Renee Wickliffe
Senior Māori Sportswoman



Stephen Kearney
Māori Sports Coach



Tu Toa Girls Netball Team
Māori Sports Team

Trillian Trust Māori Sports Awards



Fletcher

CONSTRUCTION

Senior Māori Sportswoman

Hineahuone

Renee Wickliffe *Hauraki*
Triple international (rugby, touch and sevens)

Winston Peters presenting
on behalf of Fletcher
Construction

Hineahuone

When Tane began life for all living things he searched in vain for a way to perpetuate life in his form. He was sent by the spiritual beings to a place called Kurawaka where the soil was red and fertile. From Papatuanuku's loins he fashioned in the earth the form of a woman and he breathed life into her – she was first human being – she was Hineahuone, Hine who comes from the Earth. Tane mated with her and begat Hinetitama. Hineahuone is acknowledged as the ultimate human eponymous ancestor for all genealogies, she is the spring of humankind or the ultimate woman.

It is for this reason that the Māori Sportswoman should be named in the spirit of an illustrious beginning, she is truly ultimate.

Trillian Trust
Māori Sports Awards



MWDI

Junior Māori Sportswoman

Te Tamahine-ā-Papatuānuku

Tiffany Piper *Ngāti Kahungunu, Ngāti Tuwharetoa*
World Pistol Shooting Champion



Moana Tapsell NZCT

Te Tama-ā-Ranginui

Ranginui was the Sky Father who was separated from the Earth Mother – Papatuanuku by Tane who was to be their greatest son. Ranginui symbolises the male line and even Tane was later to be renamed great Tane of Rangi. Ranginui is the Maori symbol for the beginning and together with Papatuanuku they are the Maori genesis. Even today Papatuanuku is acknowledged on all occasions when Maori gather, she is the mother, she fees life into all living things, plant and animal, there is no beginning beyond the Earth Mother.

It is appropriate that the junior sportspersons both boy and girl should carry of Ranginui and Papatuanuku. They are the seeds from which men and women grow.

Trillian Trust
Māori Sports Awards



Senior Māori Sportsman

Te Tama-ā-Tānenuiārangi

Benji Marshall *Ngāi Tuhoē*

Captain of the West Tigers and the New Zealand National rugby league team - 'The Kiwis'



Stan Walker on behalf of Trillian Trust

Te Tama-ā-Tānenuiārangi

Tāne, the greatest son of Rānginui and Papatuanuku. Tāne the bringer of daylight, the fountain of life to all living things, Tāne the beginning, Tāne the source of knowledge, Tāne who discovered Te Ira Tangata and created the ongoing generations of mankind. It was Tāne also who committed the first sin and right until this time has caused the imbalance between man and woman.

The greatest sportsman has to be called the Son of Tāne, it is that person who manifests excellence in the male being.

Trillian Trust
Māori Sports Awards

MIGHTY RIVER POWER

Junior Māori Sportsman

Te Tama-ā-Ranginui

Zac Guildford *Ngāti Kahungunu*
All Black, Crusader and Hawkes Bay winger



Tania Simpson presenting
on behalf of Mighty River
Power

Te Tama-ā-Ranginui

Ranginui was the Sky Father who was separated from the Earth Mother – Papatuanuku by Tane who was to be their greatest son. Ranginui symbolises the male line and even Tane was later to be renamed great Tane of Rangi. Ranginui is the Maori symbol for the beginning and together with Papatuanuku they are the Maori genesis. Even today Papatuanuku is acknowledged on all occasions when Maori gather, she is the mother, she fees life into all living things, plant and animal, there is no beginning beyond the Earth Mother.

It is appropriate that the junior sportspersons both boy and girl should carry of Ranginui and Papatuanuku. They are the seeds from which men and women grow.

Trillian Trust
Māori Sports Awards

Disabled Māori Sportsperson

Te Toihuarewa

Matthew Lack *Te Whakatōhea*
Paralympian Wheel Chair Racing Champion



Te Toi Huarewa

It was IO himself (the supreme being) who sent forth his sacred messengers Apa Whatukura from Te Toi a Rangi the uppermost heaven to see who could climb the heavens in search of knowledge. Both Whiro and Tane responded to the challenge, but only Tane was successful. The reason that Tane was successful was that he chose to climb by the routes Te Toi Huarewa and Te Aratiatia, accordingly, he reached Tikitiki o Rangi and was given "Nga Kete o te Wananga" the sacred baskets of knowledge and the sacred stones of education. The name Te Toi Huarewa has been chosen for the award to sportsperson with a disability. In order to achieve success Te Toi Huarewa signifies whanau support, diligence and dedication. Furthermore, the prize at the end of this pathway is knowledge, understanding and great achievement.



Trust
Māori Sports Awards



Te Whanau O
Waipareira Trust

Māori Sports Administrator

Maui Tikitiki-ā-Taranga

Michael Parker *Ngāti Manawa*
CEO Māori Football



Evelyn Taumaunu,
Waipareira Trust

Māui Tikitiki-ā-Taranga

Maui was the youngest child of Hine Taranga hence the name Maui top knot of Taranga. Maui was renowned for many extraordinary supernatural deeds, he brought fire to mankind from Mahuika's fingernails, he fished up the North Island using the Matika- special fishhook made from the jawbone of his grandmother Murirangawhenua, Maui slowed down the sun to give us a 24 hour day, Maui was magical and mysterious. Maui was both brave and frivolous, Maui was a gambler, he took on all odds. It is appropriate therefore that the trophy of Maui is awarded to the Sports Administrator since the administrator has to do battle on all fronts, requires a repertoire of talent and devices in order to be successful.

Trillian Trust
Māori Sports Awards

Māori Sports Coach

Te Maru o Tumatauenga

Stephen Kearney *Te Atiawa*
Kiwi Rugby League Coach



Te Maru o Tumatauenga

Tumatauenga, Māori God of War, son of Ranginui and Papatuanuku all things relating to battle, courage, confrontation, anger and struggle came within the realms of Tumatauenga. The Maori Battalion was named after Tumatauenga – Te Hokowhitu a Tu.

It is the coach who is in the direct firing line in all sports, the coach decides the tactics, prepares the team and trains in the arm of combat. The coach is the general and accordingly acts within the authority of Tumatauenga. (Te Maru o Tumatauenga)

Human Trust
Māori Sports Awards



Māori Sports Media Award

Te Reo o Te Para Whakawai

Sharon Hawke *Ngāti Whatua*
Māori Television



Matiu Dickson,
PHARMAC

Te Reo o te Para Whakawai

"Te Reo" is a representation of the language used within sports codes around the world and the "Para-Whakawai" depicts the practice within the use of weaponry.

This honour should go to a person or persons' that has the, ability, skill and knowledge base of all sports codes. To have the passion to deliver and present those skills through the Media.

The Māori sports media award – is a commitment by Te Tohu Taakaro o Aotearoa to work constructively with the media to encourage more positive reporting on Māori sports, and to improve the depth and quality of Māori sports reporting.

Trillian Trust
Māori Sports Awards

Māori Umpire/Referee

Te Aratiatia

Sheldon Eden-Whaitiri *Ngāti Kahungunu*
Rugby Referee



Te Aratiatia

Overcoming all odds as Tāne did with his elder brother Whiro, to ascend the heavens by way of Te Toi Huarewa and Te Aratiatia; to acquire "Ngā Kete o te Wananga" and the sacred stones of education.

Therefore Te Aratiatia denotes the extremely unique battles that Umpires and referees have to tolerate with players in a chosen sport. They have to be vigilant within the decisions they make and passionate in the way they deliver those decisions.

Trillian Trust
Māori Sports Awards



Urban Maori Radio

Māori Sport Team

Nga Iki a Whiro

Tu Toa Netball Team



Willy Jackson, MUMA

Ngā Ika a Whiro

When Tāne ascended up to the heavens to seek "Ngā Kete o te Wananga" (the baskets of knowledge), his older brother Whiro was furious; he considered he had more right to the task than Tāne. So Whiro sent plagues of insects, reptiles and birds to attack Tāne, which complicated his task; but with the assistance of Tawhiri-mātea (god of the winds), he was able to continue until he arrived at the summit of the heavens. On his return expedition, Whiro and his plague again attacked Tāne; when he finally reached earth, Whiro insisted that he should be the custodian of the treasures.

Tāne with his supporters rejected his demands so Whiro was eventually exiled to the underworld where he still dwells, and continually endeavors to wreak havoc for the gods and mankind.

Trillian Trust
Māori Sports Awards

Best Community Initiative Award

Huakina Trust

Presented by SPARC CEO, Peter Miskimmin



He Oranga Poutama

He Oranga Poutama is a unique initiative using sport and physical leisure to improve Maori health and wellbeing. The joint venture between SPARC, Health Sponsorship Council, Community Employment Group and Alcohol Advisory Council (ALAC) with the support of Te Puni Kokiri has led to the appointment of 11 kaiwhakahaere (co-ordinators) throughout the country.

The goal is to encourage Māori to adopt and maintain healthy lifestyles through Māori sport and physical leisure activities. Kaiwhakahaere promote employment opportunities with the emphasis on Māori development through Marae and local communities, partnerships between relevant agencies and groups, and Auahi Kore (Smoke free) and Manaaki Tangata (safer alcohol use) environments.



"Unleashing the potential of people"



Trillian Trust
Māori Sports Awards



Gallery





Trillian Trust
Māori Sports Awards



Trillian Trust
Māori Sports Awards



Trillian Trust
Māori Sports
Awards

Māori Sports Awards Scholarships

Ngā Kaitango mō Ngā Karahipi

Portia **WOODMAN**
Ngāpuhi

Sam **HENWOOD**
Ngāpuhi

AUT

The scholarships are of considerable value as it pays full tuition fees for up to three years of study within a degree at AUT University, renewed annually pending academic performance.



Lynette **SHELFORD**
Whakatōhea

Ngawai **REWHA**
Ngāpuhi, Tainui

MANUKAU INSTITUTE OF TECHNOLOGY

For one academic year to a candidate of Māori descent who is actively involved in sports either as an athlete or in an administration or coaching role.





Māori Sports Awards Scholarships

Ngā Kaitango mō Ngā Karahipi

Herewini Whanau HOCKEY SCHOLARSHIP

Te Haupoi Karahipi nō Te Herewini Whānau

Samantha **HARRISON**

Ngāpuhi

Dwayne **PATERSON**

Ngāpuhi



Pat Walsh Memorial SCHOLARSHIPS

'Māori Youth in Sport'

*He karahipi maharatanga ā Pat Walsh
- mā ngā taiohi Māori ina hākinakina*

Santana **HARRIS**

Ngāpuhi

Tama **TOA ROPATI**

Ngāpuhi





**SKILLS
ACTIVE**TM
AOTEAROA

Māori Sports Awards Scholarships

Samantha **HARRISON** *Ngapuhi*

An incredible year for this 18 year old NZ Black Stick from the Diocesan School.

Playing for the Southern Districts Club her 2009 achievements are:

- ▶ Auckland Sec. Schools rep.
- ▶ Auckland U/18 rep.
- ▶ Auckland U/20 rep.
- ▶ Auckland NHL rep.
- ▶ NZ Black Sticks

- ▶ Herewini whanau scholarship
- ▶ Auckland Hockey junior player of the year
- ▶ Auckland Young Sportswoman of the year, ASB College Sport awards





*"Fostering pride and sports participation
for our Māori youth of tomorrow"*

Tamariki Sport & Cultural Day

rā o ngā tamariki

Co-hosted at Te Kura Kaupapa Maori a rohe o Mangere on Friday 20th November.

Following the vision of the late Albie Pryor, the Tamariki Sport & Cultural Day began in 1999 on the turf of our founder's many rugby battles - Eden Park.

The purpose of the Tamariki Sport & Cultural Day is to provide tamariki from kura kaupapa (Māori immersion schools) and bilingual units from mainstream schools with an opportunity to take part in sport - including the revival of traditional Māori sports - and cultural activities.

The event provides a link to elite Māori sport role models and the positive contribution they are making for ngā tamariki and the wider community.

The Tamariki Sport & Cultural Day also promotes and fosters a sense of mana (prestige), ihi (inspiration) and wehi (awe) to nga tamariki.





COGS



Te Puni Kōkiri
REALISING MĀORI POTENTIAL





Māori Sports Profiles & Database

Ngā whakaturanga hākinakina Māori me ngā putunga korero

- profiles
- organisations
- book details
- sports awards
- contact details

Search

A B C D E F G H I J K L M N O P Q R S T U V W X Y Z All

Sort by: Last Name | First Name | Sport | Iwi

Leanne Walker

Te Whānau-ā-Apanui

BASKETBALL, TOUCH RUGBY



Lisa Tamati

Te Āti Awa, Ngāti Raukawa

ULTRA MARATHON



Louisa Wall

Ngāti Tuwharetoa, Waikato

RUGBY, NETBALL, JAVELIN



Mackie Herewini

Ngāti Tuwharetoa

LAWN BOWLS, JOCKEY, BOXING, TENNIS, RUGBY, GOLF



Margaret Hiha (nee Raureti)

Ngāti Rangitihī, Ngāti Whakaue, Ngāti Pūkiao, Tuhourangi

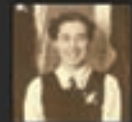
HOCKEY, TENNIS, BASKETBALL, SOFTBALL



Margaret (Meg) Matangi

Te Ātiawa, Taranaki, Ngāti Mutunga

BASKETBALL (NETBALL)



Maunga Emery

Ngāti Maniapoto

RUGBY, RUGBY LEAGUE



Michael Campbell

Ngāti Ruanui, Ngāti Rauru

GOLF



Riki Ellison

Ngāi Tahu

GRIDIRON



Profiles of Māori Sporting Greats

www.maorisportsawards.co.nz



Māori Sports Organisations & Database

Ngā roopu Māori whakatikatika hākinakina

profiles

organisations

book details

sports awards

contact details

Search

A B C D E F G H I J K L M N O P Q R S T U V W X Y Z All

Sort by: Name | Sport

Aotearoa Māori Tennis Association Incorporated

TENNIS

Overview | tirohanga whanui

INTRODUCTION

The history of Māori tennis is littered with a glimmering array of people and events:

History relies on the memory of,

Those who have created it, those who have witnessed it, those who have recorded it

Those who remember it, those who have been told about it

Those who have heard about it, and no doubt, those who have embellished it!

That we can look back and see where we've come from. So too can we now look forward and know where we're going!

ORIGINS

The history of Māori tennis is one of remarkable achievement and commitment, from the early days when improvised tennis courts were carved out at marae and whare, to its heyday in the 1950s, when the number of Māori from iwi throughout the country taking part in Māori tournaments rivaled and even outstripped participation in Pakeha events. Along the way there have been some colourful and hugely talented players who have excelled on the world stage.

Māori quickly picked up the skills and social opportunities of the game shortly after it was introduced to the country in the 1870s. Māori were soon excelling at the sport, and widespread competitions were being organised among hapu and iwi by the turn of the century.

IMPROVISATION

While it is not certain in which region tennis was first played by Māori in New Zealand, it is known, Māori were playing tennis in these formative years in regions such as Hawkes Bay, Wairarapa and the East Coast. While it would be overstepping the mark to suggest Māori tennis began in Hawkes Bay, it is clear that tennis was very strong in this area in the late 19th Century. Photographs and anecdotes reveal Māori from Ngāti Kahungunu working on large farms and sheep stations in Hawkes Bay picking up the sport in the 1890s.

One thing is certain, the game was being played to a high standard by Māori in the 1890s and by the early 1900s the sport was established with hapu and iwi throughout the country. Tennis courts had become established at many marae and were carefully maintained in prominent areas adjacent to marae buildings.

Stories abound of Māori in the early days ingeniously scraping out a surface for a court, and improvising with make-shift nets of string, flax or other materials stretched across the court. Lines would often be



www.amta.co.nz

Photo Gallery



Contact Details & History of Māori Sports Organisations

www.maorisportsawards.co.nz

TE TOHU TAAKARO O AOTEAROA CHARITABLE TRUST

Financial Report

For the Year Ended 31 December 2009

TE TOHU TAAKARO O AOTEAROA CHARITABLE TRUST

Index

	Page
Trust Directory	3
Statement of Responsibility	4
Statement of Financial Performance	5
Statement of Movements in Trustees Funds	6
Statement of Financial Position	7
Notes to Financial Statements	8-10
Audit Report	11

TE TOHU TAAKARO O AOTEAROA CHARITABLE TRUST

Trust Directory

For the year ended 31 December 2009

Nature of Business:	Maori Sports Development
Date of Establishment:	10 August 1994
Trustees:	Pine Harrison (Chairperson) John Paki Kevin Pryor Ron Karaitiana Tamati Reedy Waka Nathan
Banker:	ASB Bank Botany Downs
Accountant:	Alan Chester Chartered Accountant
Auditor:	Crombie & Associates Chartered Accountants
Solicitor:	Walters Law Barristers & Solicitors

TE TOHU TAAKARO O AOTEAROA CHARITABLE TRUST
Statement of Responsibility
For the Year Ended 31 December 2009

The Board is responsible for the maintenance of adequate accounting records and the preparation and integrity of the financial statements and related information. The independent external auditors, Crombie Associates, have audited the financial statements and their report appears on page 11.



The Board is also responsible for the systems of internal control. These are designed to provide reasonable but not absolute, assurance as to the reliability and integrity of the financial statements, and to adequately safeguard, verify and maintain accountability for assets, and to prevent and detect material misstatements. Appropriate systems of internal control have been employed to ensure that all transactions are executed in accordance with authority and are correctly processed and accounted for in the financial records. The systems are implemented and monitored by suitably trained personnel with appropriate segregation of authority and duties. Nothing has come to the attention of the Board to indicate that any material breakdown in the functioning of these controls, procedures and systems has occurred during the year under review.

The financial statements are prepared on a going concern basis. Nothing has come to the attention of the Board to indicate that the Trust will not remain a going concern in the foreseeable future.

In the opinion of the Board:

- the statement of financial performance is drawn up so as to give a true and fair view of the deficit of the Trust for the financial year ended 31 December 2009;
- the statement of financial position is drawn up so as to give a true and fair view of the state of affairs
- there are reasonable grounds to believe that the Trust will be able to pay its debts as and when they fall due.

Signed on behalf of the Board on

Trustee  Trustee 
12/08/2010

TE TOHU TAAKARO O AOTEAROA CHARITABLE TRUST
Statement of Financial Performance
For the Year Ended 31 December 2009

		2009	2008
	Notes	\$	\$
Revenue			
Maori Sports Awards Revenue	2.	264,844	287,437
Tamariki Day Revenue		46,933	28,378
Other Grants Received		34,450	49,490
		<u>346,227</u>	<u>365,305</u>
Direct Expenses			
Awards Evening - Direct Expenses	3.	160,549	136,018
Tamariki Day Expenses		30,294	26,537
		<u>190,843</u>	<u>162,555</u>
Administration Expenses			
Accident Compensation Levy		1,509	1,281
Audit Fee		3,556	4,778
Bank Charges		242	296
Computer Expenses		9,730	9,226
Depreciation	4.	6,249	8,415
Electricity		1,642	1,219
General Expenses		5,008	9,825
Insurance		367	1,101
Interest		175	-
Marketing & Promotion		10,316	8,998
Motor Vehicle Expenses		10,952	12,886
Postage & Courier		821	2,206
Printing & Stationery		4,447	19,756
Rent		10,816	10,816
Repairs & Maintenance Office		1,136	421
Research/Data base expenses		19,667	2,578
Telephone Expenses		10,779	11,254
Trustee Expenses		267	4,839
Travel Expenses		1,562	762
Wages		106,513	113,672
Web Site costs		7,639	3,081
		<u>213,393</u>	<u>227,410</u>
Total Expenses		404,236	389,965
Net (Deficit)/Surplus		<u>(58,008)</u>	<u>(24,660)</u>

The attached notes form part of and should be read in conjunction with the financial statements

TE TOHU TAAKARO O AOTEAROA CHARITABLE TRUST
Statement of Movements in Trustees Funds
For the Year Ended 31 December 2009



	2009	2008
	\$	\$
Balance beginning of year	76,587	101,247
Net (Deficit)/Surplus	<u>(58,008)</u>	<u>(24,660)</u>
Total Recognised revenue and expenses	(58,008)	(24,660)
Balance end of year	<u><u>18,578</u></u>	<u><u>76,587</u></u>

The attached notes form part of and should be read in conjunction with the financial statements

TE TOHU TAAKARO O AOTEAROA CHARITABLE TRUST
Statement of Financial Position
As at 31 December 2009

	Note	2009 \$	2008 \$
Trustees Funds		<u>18,578</u>	<u>76,587</u>
Represented by:			
Current Assets			
ASB Bank		11,986	22,419
Sundry Debtors		5,943	52,931
GST Refund		5,883	-
		<u>23,811</u>	<u>75,350</u>
Non Current Assets			
Property, Plant & Equipment	4	18,099	23,135
Total Assets		<u>41,910</u>	<u>98,485</u>
Current Liabilities			
Sundry Creditors		23,332	22,898
Net Assets		<u>18,578</u>	<u>75,587</u>

Signed on behalf of the Board on

Trustee  12/08/2010 Trustee 

The attached notes form part of and should be read in conjunction with the financial statements

TE TOHU TAAKARO O AOTEAROA CHARITABLE TRUST

Notes to the Financial Statements

For the Year Ended 31 December 2009

1. STATEMENT OF ACCOUNTING POLICIES

Reporting Entity

The reporting entity is a charitable trust which was registered under the Charities Act 2005.

Basis of Preparation

The financial statements of the entity have been prepared in accordance with generally accepted accounting practice.

The accounting principles recognised as appropriate for the measurement and reporting of earnings financial position on an historical cost basis have been used. Reliance is placed on the fact that the Trust is a going concern.

Differential Reporting

The Trust qualifies for differential reporting as it is not publicly accountable and is not considered large and it has taken advantage of all differential reporting exemptions, except for FRS 19 Accounting for Goods and Services Tax, with which it has complied fully.

Measurement Base

The measurement base adopted is that of historical cost.

Particular Accounting Policies

The following specific accounting policies which materially affect the measurement and reporting of financial performance and financial position have been applied.

(a) Sponsorship and Grants

Sponsorship and Grants are recorded as revenue at the point their receipt is formally acknowledged by the Trust. Sponsorship and Grants with conditions attached are only recognised when the respective conditions are fully met.

(b) Award Evening Table Sales Income

Maori Sports Award Evening table sales income are recorded as revenue at point of sale.

(c) Accounts Receivable

Accounts receivable are stated at expected realisable value. Bad debts are written off in the year in which they are identified.

TE TOHU TAAKARO O AOTEAROA CHARITABLE TRUST
Notes to the Financial Statements
For the Year Ended 31 December 2009

(d) Property, Plant and Equipment

Property, plant and equipment are recorded at historical cost or, in the case of donated assets recorded at their fair value at the date of receipt less accumulated depreciation.

Historical cost is the value of consideration given to acquire the assets and the value of other directly attributable costs which have been incurred in bringing the assets to the location and condition necessary for their intended service.

(e) Depreciation

Cost of purchasing an asset is spread across the life of the asset. Charging depreciation is the accounting method used to reflect this annual cost. Depreciation has been calculated on a diminishing value basis "dv" using the following rates:

Office Furniture & Equipment	11%- 60% dv
Motor Vehicles	26% dv

(f) Goods and Services Tax

These financial statements have been prepared on a GST exclusive basis of accounting with the exception of receivables and payables which include GST invoiced.

(g) Income Tax

The organisation has been approved as a non-profit body and is exempt from income tax, on income other than business income, derived by the trustees in trust for charitable purposes in accordance with section DB 32 of the Income Tax Act 2004.

(h) Changes in Accounting Policies

There have been no changes in accounting policies. All policies have been applied on a consistent basis with those used in previous years.

TE TOHU TAAKARO O AOTEAROA CHARITABLE TRUST**Notes to the Financial Statements****For the Year Ended 31 December 2009**

2. AWARDS EVENING - REVENUE	2009	2008
	\$	\$
Awards Evening Table Sales	45,564	57,349
Awards Evening Grants Received	219,279	142,733
Awards Evening Sponsorship	-	87,355
	<u>264,844</u>	<u>287,437</u>

3. AWARDS EVENING - DIRECT EXPENSES	2009	2008
	\$	\$
Function Expense	136,376	111,886
Graphics and Printing	12,900	10,620
Travel Accommodation	11,273	13,512
	<u>160,549</u>	<u>136,018</u>

4. PROPERTY, PLANT AND EQUIPMENT

Year ended 31 December 2009	Cost	Depn	Accum Depn	Net Book Value
Office Furniture & Equipment	102,196	5,541	86,112	16,084
Motor Vehicles	10,667	708	8,652	2,015
	<u>112,863</u>	<u>6,249</u>	<u>94,764</u>	<u>18,099</u>

Year ended 31 December 2008	Cost	Depn	Accum Depn	Net Book Value
Office Furniture & Equipment	100,983	7,458	80,571	20,412
Motor Vehicles	10,667	957	7,944	2,723
	<u>111,650</u>	<u>8,415</u>	<u>88,515</u>	<u>23,135</u>

5. COMMITMENTS

There are no commitments as at balance date. (2008: \$Nil)

6. CONTINGENT LIABILITIES

There were no known contingent liabilities as at balance date. (2008: \$Nil)

AUDIT REPORT

To the Trustees of the Financial Statements of Te Tohu Taakaro O Aotearoa Charitable Trust

We have audited the financial statements on pages 5 to 10. The financial statements provide information about the past financial performance of the Te Tohu Taakaro O Aotearoa Charitable Trust ("Trust") for the year ended 31 December 2009 and its financial position as at that date. This information is stated in accordance with the accounting policies described in the note 1 to the financial statements.

Trustees Responsibilities

The Trustees of Te Tohu Taakaro O Aotearoa Charitable Trust are responsible for the preparation and presentation of the financial statements which fairly reflect the financial position of the Trust as at 31 December 2009 and of the results of its operations for the year ended on that date.

Auditors' Responsibilities

We are responsible for expressing an independent opinion on the financial statements presented by the Board of Trustees and reporting our opinion to you.

Basis of Opinion

An audit includes examining on a test basis, evidence relevant to the amounts and disclosures in the financial statements. It also includes assessing:

- the significant estimates and judgements made by the Trust in the preparation of the financial statements; and
- Whether the accounting policies are appropriate to the Trust's circumstances and have been consistently applied and adequately disclosed.

We conducted our audit in accordance with New Zealand Auditing Standards. We planned and performed our audit so as to obtain all the information and explanations which we considered necessary in order to provide us with sufficient evidence to obtain reasonable assurance that the financial statements are free from material misstatements, whether caused by fraud or error. In forming our opinion we also evaluated the overall adequacy of the presentation of information in the financial statements.

We have no relationship with or interest in the Trust other than our capacity as auditors.

Unqualified Opinion

We have obtained all the information and explanations that we have required.

- proper accounting records have been kept by the Trust as far as appears from our examination of those records; and
- the financial statements on pages 5 to 10:
 - comply with generally accepted accounting practice; and
 - give a true and fair view of the financial position of the Trust as at 31 December 2009 and the results of its operations for the year ended on that date.

Our audit was completed on 6 August 2010 and our unqualified opinion is expressed as at that date.

Crombie & Associates

Chartered Accountants

Te Tohu Taakaro o Aotearoa Charitable Trust

Office

36 Carruth Rd
Papatoetoe
Manukau City, 2025

Phones

09 278 6591
0274 901 237
027 212 9255

Fax

09 278 6582

Email

info@maorisportsawards.co.nz

Postal

PO Box 23 650
Papatoetoe
Manukau City, 2155

Website

www.maorisportsawards.co.nz



Trillian Trust
Māori Sports Awards



Te Puni Kōkiri
REALISING MĀORI POTENTIAL



Te Kaunihera o
MANUKAU
City Council



Hapai Te Hauora Tapui
Maori Public Health

